

# RIKON

## 10" x 18" MINI LATHE 70-105

### Headstock Spindle

1" x 8 TPI Spindle has MT2 taper for pen mandrels



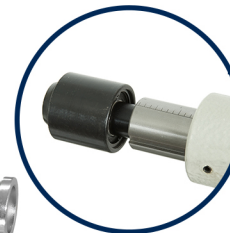
### Safety Switch

Safety ON/OFF switch and locking key to prevent unauthorized use



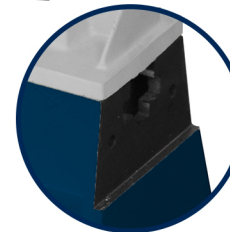
### RAM Travel

Easy adjust handle allows up to 1-3/4" of travel



### Machined End

Great for adding extensions for turning longer workpieces



- **Motor**
  - Horsepower.....1/2 HP TEFC
  - Amps.....3.7
  - Volts.....120V, 60 Hz
  - RPM.....1,700 RPM
  - Direction.....Forward
- **Speeds**
  - Number of Speeds.....5
  - Ranges.....500, 1,175, 1,850, 2,225, 3,200

- **Swing**
  - Swing Over Bed.....10"
  - Swing Over Tool Rest.....7-1/2"
  - Working Distance Between Centers.....18"
  - Tool Rest Post Diameter.....5/8"
- **Headstock / Tailstock**
  - Spindle Nose Inch x TPI.....1" x 8
  - Headstock Taper.....MT2
  - Tailstock Taper.....MT2
  - Ram Travel.....1-3/4"

- **Overall**
  - Length.....35-1/2"
  - Width.....10-1/2"
  - Height.....14-3/4"
  - Base Size.....29-1/2" x 7-3/8"
  - Net Weight.....75 lbs.
  - Shipping Weight.....80 lbs.
  - Shipping Carton.....32-1/2" x 16-3/4" x 11-7/8"
  - Warranty.....5 Years

For more information or to find a distributor near you, please visit:

[www.rikontools.com](http://www.rikontools.com)





### 70-906

21-1/2" Mini Lathe Bed Extension



### 70-920

Universal Midi and Mini Lathe Stand  
Adjusts from 23-1/4" to 37-1/4" Long  
and 24-1/2" to 34-1/2" Working Height.  
Length with Extension Added is 42" to 69-1/2"



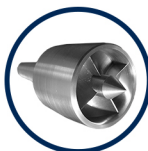
### 70-913

Mini Lathe Stand Extension  
The Mini Lathe Extension Works in  
Combination with all RIKON Lathe Stands  
and Bed Extensions



### Tool Rests

5/8" Post  
70-924 - 4" Tool Rest  
70-926 - 6" Tool Rest  
70-928 - 8" Tool Rest



### Badger Spur Center

70-940  
4 Sharp Driving Spurs Hold Spindles  
Safety Cover Retracts when Mounting Workpiece  
Workpiece can be Stopped for Inspection  
Spring Loaded Safety Guard and Center Point



### Live Centers

70-946 - MT2 4-1/2" Long



### Spur Centers

70-943 - MT2 3-1/16" Long (Black)  
70-944 - MT2 2-11/16" Long (Silver)



### Center Point HSS

70-947 for 70-944 (Silver)  
70-948 for 70-943 and 70-945 (Black)



**RECORD POWER**  
ESTABLISHED 1909

### SC3 Chuck Package

78-062 - 1" x 8 Direct Thread:  
50mm Jaw Set  
Woodworm Screw  
Pinion Key



### 30-991

Drill Chuck and Arbor  
5/8" and Arbor MT2



### Face Plates & Nylon Washer

70-933 - 3" Face Plate 1" x 8 TPI  
70-936 - 6" Face Plate 1" x 8 TPI  
70-992 - Nylon Washer (1-3/64" I.D. x 1-5/8" O.D.)

For more information or to find a distributor near you, please visit:

[www.rikontools.com](http://www.rikontools.com)